

Slide Show Manager

Installation instructions and system requirements



signotec GmbH
Am Gierath 20 b
DE-40885 Ratingen

+49 (0) 2102/53575-10
info@signotec.de
www.signotec.com

Document version 3.9.14 dated 15. March 2011

Index of content:

1	INTRODUCTION	4
2	REQUIREMENTS	4
3	INSTALLATION	5

Imprint

All rights reserved. This documentation and the therein described components are copyright protection products of the signotec GmbH Ratingen in Germany. Partial or complete reproduction is only admissible with written authorization of signotec GmbH. All used hardware and software names are trademarks and/or brand names of the respective manufacturers/owners. Modifications reserved.

Document history

Version	Datum	Processor	Status/Remark
1.0	24.11.2010	Valentin Tkachev	Documentation created
3.9.13	01.03.2011	Valentin Tkachev	Translated into English
3.9.14	15.03.2011	Arne Brandes	Smaller corrections

1 Introduction

With the signotec SIGMA and OMEGA pads signotec provides this configuration application for a slide show for the OMEGA pad and a fixed image for the SIGMA pad.

2 Requirements

The operating system must be at least Microsoft Windows XP with Service Pack 3 or a newer version of Windows.

The slide show application was tested under the following Windows versions:

Windows XP with Service Pack 3
Windows Vista
Windows 7

The manager application requires the .NET-Framework 2.0 by Microsoft. The .NET-Framework is not included in this installation and can be procured for free from Microsoft.

Information: If the .NET-Framework is not installed in the respectively required version, the manager will not work!

The installation of the .NET-Framework can be done also after performing this setup. If the .NET-Framework is not available, this has no influence on the setup.

3 Installation

The setup is delivered as MSI-file. To execute the setup, Microsoft Installer Version 2.0 is required as minimum.

Information: The user needs administrator rights on the local system for fault free installation.

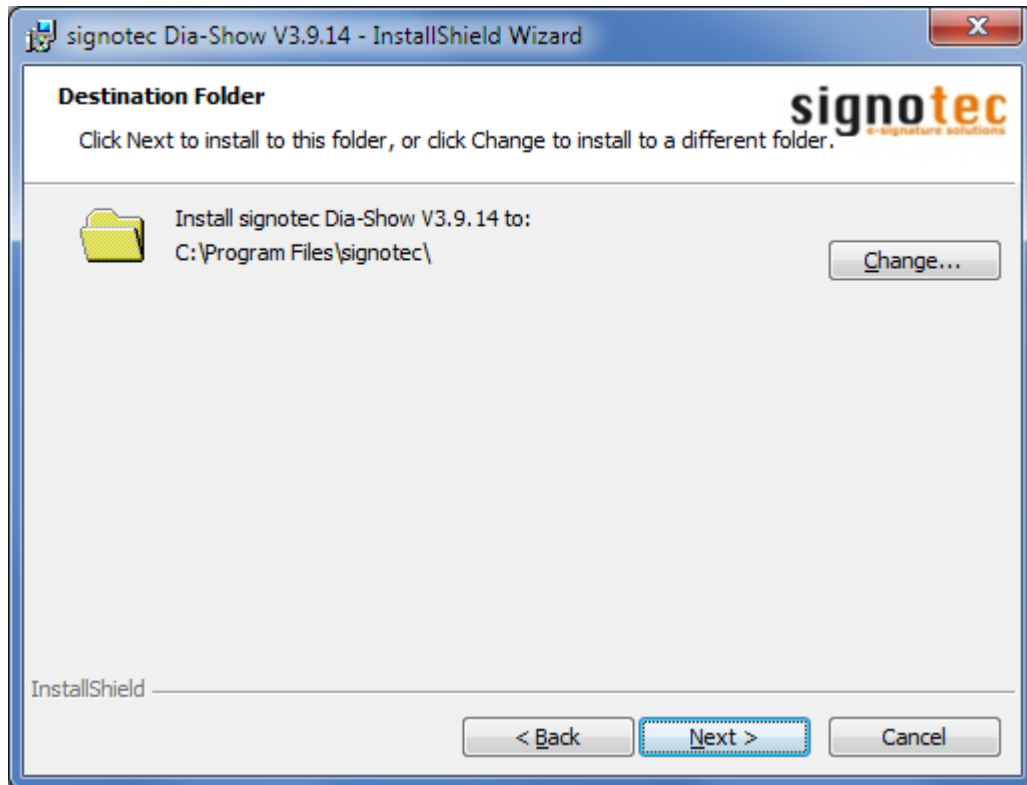
After starting the installation, e.g. by double-clicking on the MSI-file, the welcome dialogue of the installation assistant is shown. By clicking on „Next“ the installation is started.



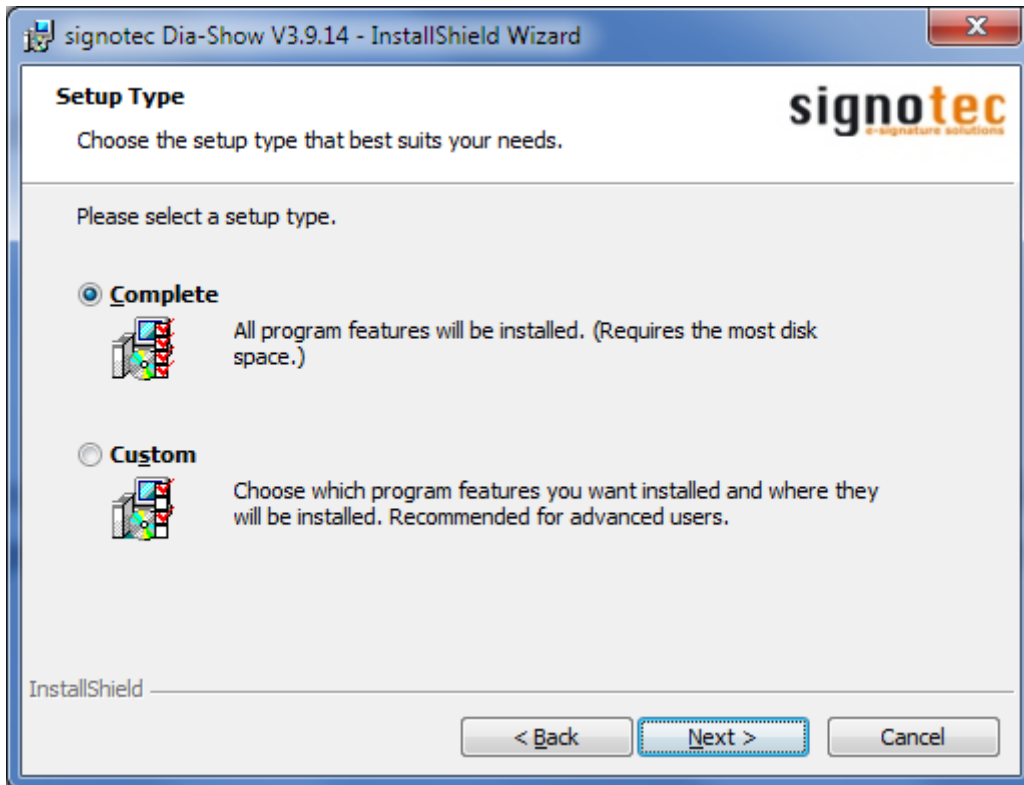
Please read the licence agreement carefully and accept it, otherwise the installation cannot be continued by clicking on „Next“.



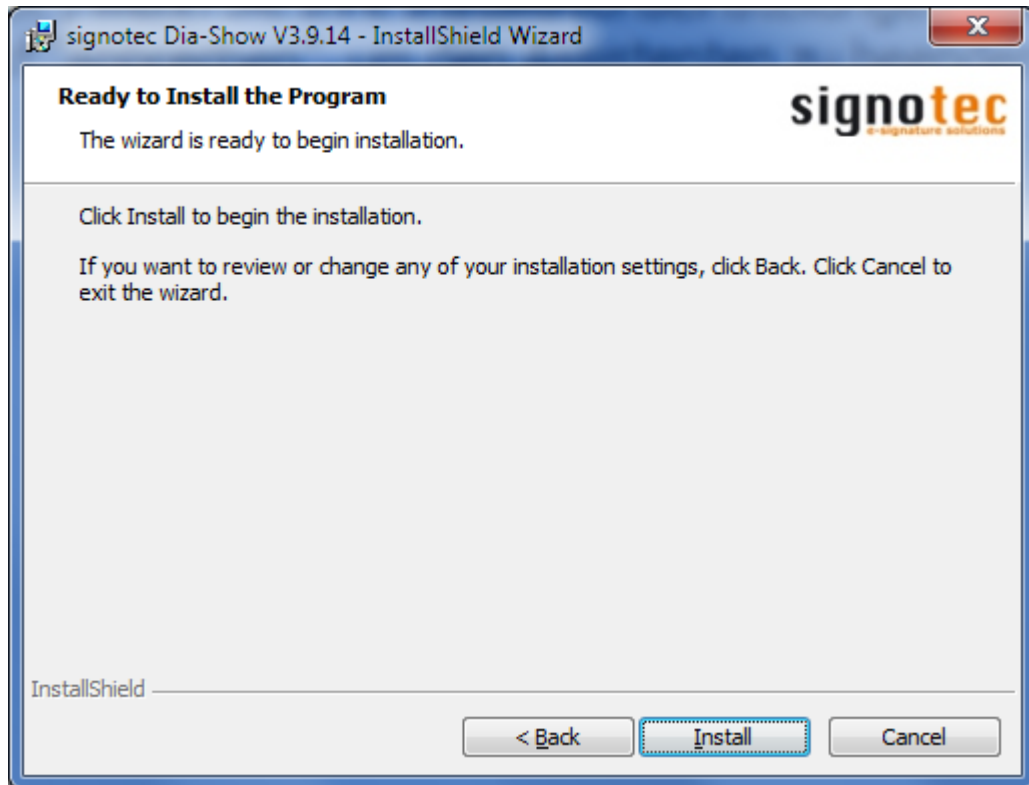
If needed, change the specified destination according to your wishes. It is saved by clicking on „Next“.



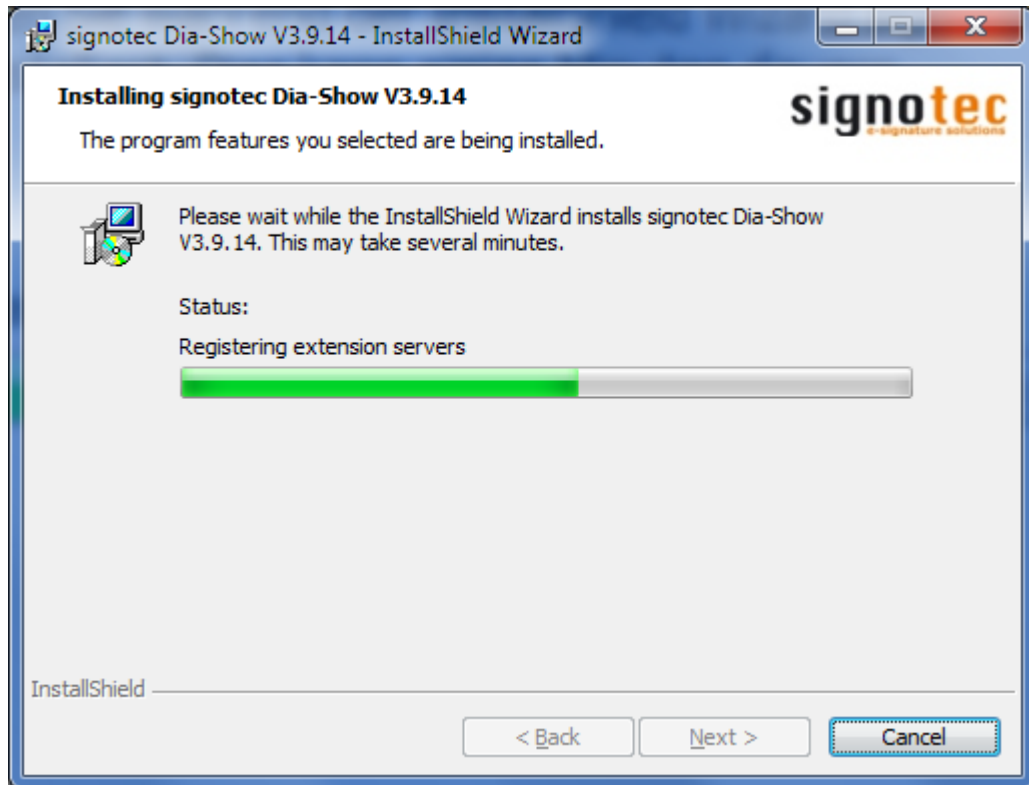
Two kinds of setup are offered. Select complete to install the complete scope of functions. Manager and client are installed together. Please confirm with „Next“.



To start the installation, please confirm with the button „Install“.



The files are copied and the necessary settings for the installation are entered. Please be patient.



The installation was successfully completed. The installation assistant is closed by clicking on „Finish“.

